



# Mobility Communications Console (MC<sup>2</sup>)

Optical Phusion's Mobility Communications Console (MC<sup>2</sup>) provides a web-based management tool for high-population, mobile-device deployments. MC<sup>2</sup> supports devices with embedded Windows operating systems such as mobile computers, intelligent scanners, personal shopping systems, intelligent telephones, customer kiosks and digital signage.

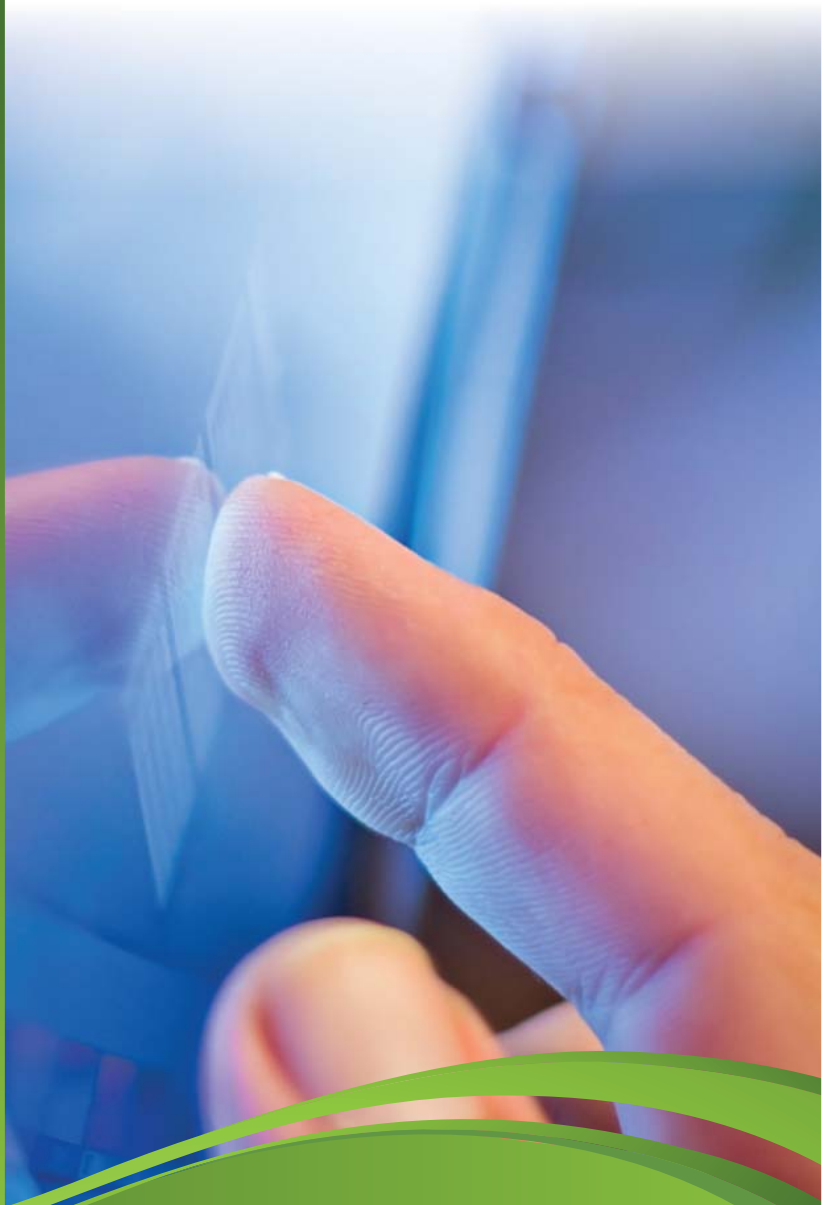
## **Overview of MC<sup>2</sup>**

MC<sup>2</sup> is designed to operate in conjunction with Odyssey Software's Athena Client product, which supports most embedded Windows operating systems. Incorporating capabilities of Athena, MC<sup>2</sup> is a powerful device management and security solution that provides device monitoring, provisioning and remote control capabilities to thousands of devices deployed throughout an enterprise infrastructure. MC<sup>2</sup> functionality goes beyond Athena to provide:

- Full device provisioning capabilities.
- Group-level security authentication and ability to lock and wipe sensitive data.
- Help desk support, including Device LiveSnap and Device LiveTalk.
- Powerful reporting engine with up to 140 filterable parameters, output feeds directly into standard Microsoft desktop applications.
- Location-based GPS-enabled device tracking.
- Phone messaging status, WWAN signal strength and communication compliance on cell-enabled units.

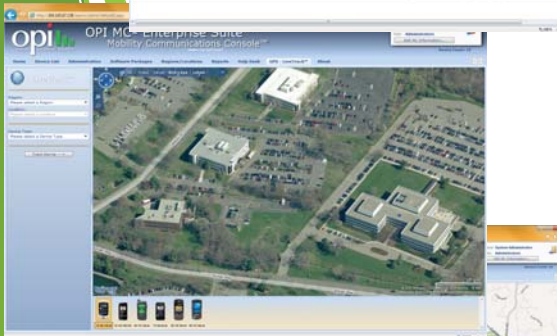
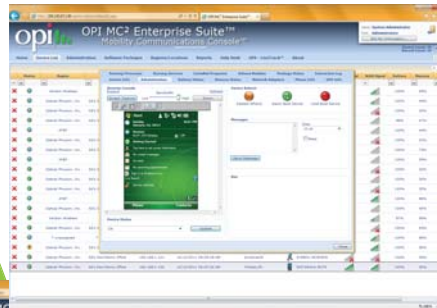
## **How do you control your mobile enterprise?**

Ready or not, enterprise mobility has arrived. Portable data terminals, smart phones, tablet PCs, and laptop computers are now integral to most enterprises. Along with the need for a centralized solution to manage, support, and track the wide array of mobile assets, comes the need to manage the device's applications and configuration settings. Applications and settings can vary widely across differing user populations, even when they use the same type of hardware devices. MC<sup>2</sup> can efficiently and effectively ensure a uniform deployment with policy compliance across your entire mobile enterprise.





*MC² monitors vital signs of the device such as battery life, available memory, software and current network configuration.*



*Remote control for Help Desk support as well as Asset and GPS Tracking.*

MC<sup>2</sup> was designed and engineered to provide a centralized console for tens of thousands of mobile devices. MC<sup>2</sup> provides the tools necessary for your IT organization to support an array of mobile devices in a diverse enterprise's mobile infrastructure.

**MC<sup>2</sup> will manage your enterprise mobile workforce!**

MC<sup>2</sup>'s key features:

- Device list with customizable views.
- Real-time remote device control, text messaging, and device soft/hard resets.
- Automated device location assignment and tracking.
- Device software/configuration provisioning.
- Complete security with active directory and LDAP integration.
- Detailed device information, memory/battery level charts, and device event logging.
- Enhanced help desk tools.
- Customized active icons are available for device location, asset tracking, or training tutorials.
- Extensible for current network management tools such as HP OpenView, Tivoli, and Motorola MSP.
- Nearly 100 API's are exposed for custom business integration applications and OEM opportunities.
- Built in custom report generator.

System requirements for customer supported installations:  
Enterprise/professional

**Hardware:**

- Dual core processor (2.4GHZ or higher) / 4GB RAM / 50GB disk space (per 8,000 devices)

**Software:**

- MS Windows Mobile / CE device w/ Athena middleware client
- MS Windows 2003/2008 Server / IIS / .Net Framework 2.1
- MS SQL Server 2000 or greater

Hosted systems and a managed service environment also available.

MC <sup>2</sup> FEATURES	MC <sup>2</sup>
<b>Software &amp; Distribution Features</b>	
Deploy & Install	✓
Update Delete	✓
Policy Management	✓
Provisioning & Support	✓
<b>Security Features</b>	
Enforced Password	✓
Device Wipe	✓
Remote Lock	✓
Audit Trail/Logging	✓
<b>Asset Management</b>	
Service Depot Tracking	✓
RFID Auto Update	✓
GPS-based Auto Locate	✓
<b>Hosting &amp; SaaS Options</b>	
Hosted Option	✓
SaaS Support Options	✓
Managed Services & Support Options	✓
Perpetual Licenses and End User Site Installations	✓
<b>Reporting</b>	
Custom Report Generator	✓
Executive Level Graphic Reports	✓
Tier II & Tier III Level Support for Custom Apps	✓



**Optical Phusion, Inc. (OPI)**  
305 Foster Street Littleton, MA 01460  
Phone 978.393.5900 · [www.opticalphusion.com](http://www.opticalphusion.com)